

## **Primjena**

Fazonski komadi upotrebljavaju se za spajanje plastičnih PVC DIN 8061/8062 u cjevovodnim sistemima za vodu i neutralne medije

## **Radni tlak** 10bara

Dozvoljeni radni tlak 16 bara maks.

Radna temperatrua 70°C maks.

## **MATERIJAL**

Fazonski komadi izrađeni su od GGG u standardnoj izvedbi.

## **Antikorozivna zaštita**

Fazonski komadi zaštićeni su sa epoksi bojom ili epoksi praškom (plastificiranje)

## **Bušenje**

Prirubnice su bušene prema DIN 28605; EN 1092-2

PN 16 do DN 150 iznad DN 200 bušenje

PN 10 (PN 16 prema specijalnoj narudbi)

## **Isporuka**

Fazonski komadi isporučuju se zajedno s gumenim brtvenim prstenom izrađenim od EPDM. U narudbi potrebno je navesti:

- broj artikla
- oznaka fazone
- nazivni promjer
- bušenje
- vrsta materijala
- vrsta zaštite

## **Application**

The fittingare applied to join the plastic PVC pipes according to DIN 8061/8602 in the pipe line system for water and neutral media.

## **Operating Pressure** is 10 bar

The maximum allowable operating pressure is 16 bar

Adimssible temperature 70°C max.

## **Material**

The standard desing fitting are made of GGG.

## **Protecting against Corrosion**

The fittings are protected by epoxy paint coat or by epoxy poerd (plasticization).

## **Boring**

Flange holes are bored according to DIN 28605; EN 1092-2: up to DN 150 for PN 16 (PN 16 on special request).

## **Delivery**

The fittings are delivered with gaskets of EPDM. In the order is to specify:

- Article Number
- Fitting Sign
- Nominal size
- Boring
- Art of Material
- Art of Protection

## Anwendung

Die Formstücke werden zum Verbinden von Kunststoffrohren aus PVC nach DIN 8061/8062 in Rohrleitungssystemen für Wasser und neutrale Medien verwendet.

**Betriebsdruck** is 10 bar

Der höchstzulässige Betriebsdruck ist 16 bar  
Zulässiger Temperature 70 ° C max.

## Material

Formstücke in Standardausführung sind aus GGG.

## Korrosionsschutz

Die Formstücke sind durch Epoxyfarbenstrich oder Epoxypulver (Plastifizierung) geschützt.

4

## Bohren

Flanschbohrung sind nach DIN 28605; EN 1092-2: bis DN 150 für PN 16, Über DN 200 für PN 10 (PN 16 nach besonderer Bestellung)

## Lieferrug

Formstücke werden mit Gummidichtring aus EPDM geliefert. In der Bestellung ist anzugeben:

- Artikel-Nummer
- Formstück-Kennzeichen
- Bohren
- Materialart
- Schutzart

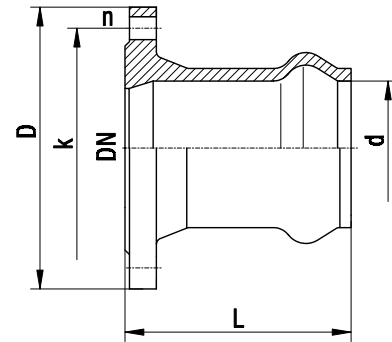
**E – KS SPOJNI KOMADI S KOLČAKOM I PRIRUBNICOM**  
**E – KS FLANGED SOCKET PIECES**  
**E – KS STÜCKE (MUFFE / FLANSCH)**

Broj artikla:  
 Art. No.  
 Artikelnummer:  
**P – 951**

**DIN 16451 PN 10/16**



Nazivni promjer Nominal size Nennweite							kg/kom. kg/piece kg/Stücke	Typ
DN	d	D	k	n	L			
50	63	165	125	4	100		3,1	EKS 050063
60	63	175	135	4	100		3,3	EKS 060063
60	75	175	135	4	100		3,5	EKS 060075
65	63	185	145	4	117,5		4,0	EKS 065063
65	75	185	145	4	117,5		4,0	EKS 065075
80	75	200	160	8	117,5		5,2	EKS 080075
80	90	200	160	8	117,5		5,9	EKS 080090
100	90	220	180	8	135		7,0	EKS 100090
100	110	220	180	8	135		7,2	EKS 100110
100	125	220	180	8	135		7,5	EKS 100125
125	110	250	210	8	145		8,2	EKS 125110
125	125	250	210	8	145		8,7	EKS 125125
125	140	250	210	8	145		9,8	EKS 125140
150	140	285	240	8	155		12,9	EKS 150140
150	160	285	240	8	155		12,7	EKS 150160
150	180	285	240	8	155		13,3	EKS 150180
200	200	340	295	8	195		22,1	EKS 200200
200	225	340	295	8	195		21,2	EKS 200225
250	250	395	350	12	215		23,5	EKS 250250
250	280	395	350	12	215		29,2	EKS 250280
300	315	445	400	12	235		42,9	EKS 300315
400	400	565	515	16	390		100,0	EKS 400400
500	500	670	620	20	415		125,5	EKS 500500



**4**

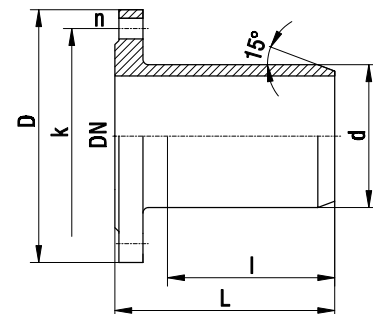
**F – KS SPOJNI KOMADI S PRIRUBNICOM**  
**F – KS FLANGED SPIGOT PIECES**  
**F – KS STÜCKE (FLANSCH)**

Broj artikla:  
 Art. No.  
 Artikelnummer:  
**P – 952**

**DIN 16451 PN 10/16**



Nazivni promjer Nominal size Nennweite							kg/kom. kg/piece kg/Stücke	Typ
DN	d	D	k	n	L	l		
50	63	165	125	4	110	85	3,3	FKS 050
65	75	185	145	4	117	92	4,5	FKS 065
80	90	200	160	4	128	101	6,5	FKS 080
100	110	220	180	8	141	114	8,0	FKS 100
125	140	250	210	8	159	130	9,1	FKS 125
150	160	285	240	8	171	142	12,6	FKS 150
200	225	340	295	8	192	160	19,1	FKS 200
250	280	395	350	12	230	199	27,7	FKS 250
300	315	445	400	12	267	232	34,8	FKS 300
400	400	565	515	16	294	261	46,2	FKS 400
500	500	670	620	20	315	276	65,0	FKS 500



**MMA-KS SPOJNI KOMAD S KOLČACIMA I PRIRUBNICOM**  
**MMA-KS DOUBLE SOCKET TEES WITH FLANGED BRANCH**  
**MMA-KS STÜCKE (DOPPELMUFFE/ABZW. FLANSCH)**

Broj artikla:  
 Art. No.  
 Artikelnummer:  
**P – 953**



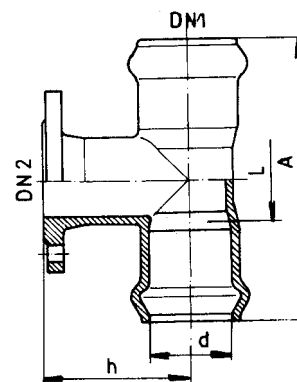
**DIN 16451**

**PN 10/16**

**EN 12842**

**4**

Nazivni promjer Nominal size Nennweite		d	A	L	h	Masa u kg Masse in kg Gewichte in kg	Oznaka artikla Art. Nr.
DN1	DN2					PN 10/16	
50	50	63	250	63	140	6,8	MMA 050050
65	50	75	265	66	150	7,8	MMA 065050
	65	75	280	66	150	9,4	MMA 065065
80	50	90	285	69	160	9,2	MMA 080050
	65	90	300	84	160	10,4	MMA 080065
	80	90	315	99	165	11,4	MMA 080080
100	50	110	310	74	170	10,9	MMA 100050
	65	110	325	89	175	11,9	MMA 100065
	80	110	340	104	175	15,0	MMA 100080
	100	110	360	124	180	15,8	MMA 100100
125	50	140	335	80	185	15,9	MMA 125050
	65	140	350	95	185	17,2	MMA 125065
	80	140	365	110	190	18,5	MMA 125080
	100	140	385	130	195	19,5	MMA 125100
	125	140	410	135	200	23,1	MMA 125125
150	50	160	360	98	205	19,2	MMA 150050
	65	160	375	98	210	21,0	MMA 150065
	80	160	390	116	205	20,8	MMA 150080
	100	160	410	136	210	24,2	MMA 150100
	125	160	435	161	215	26,5	MMA 150125
	150	160	460	186	220	29,7	MMA 150150
	200	200	460	186	220	29,7	MMA 150150
200	80	200	458	128	223	26,9	MMA 200080 A
	100	200	465	150	240	28,9	MMA 200100 A
	125	200	505	173	233	30,9	MMA 200125 A
	150	200	550	243	273	33,9	MMA 200150 A
	200	200	547	240	280	40,9	MMA 200200 A
200	80	225	455	128	235	34,9	MMA 200080 B
	100	225	475	148	240	37,6	MMA 200100 B
	125	225	500	173	245	39,8	MMA 200125 B
	150	225	525	198	250	44,7	MMA 200150 B
	200	225	575	248	260	51,4	MMA 200200 B
250	80	250	515	140	250	36	MMA 250080 A
	100	250	535	160	255	38	MMA 250100 A
	150	250	585	210	265	43	MMA 250150 A
	200	250	635	260	275	50	MMA 250200 A
	250	250	685	310	285	68	MMA 250250 A
250	80	280	501	140	282	40,5	MMA 250080 B
	100	280	521	160	288	49,4	MMA 250100 B
	150	280	573	210	288	49,4	MMA 250150 B
	200	280	687	260	285	69,9	MMA 250200 B
	250	280	673	310	287	69,3	MMA 250250 B
300	80	315	550	152	295	58,9	MMA 300080
	100	315	570	172	300	61,6	MMA 300100
	150	315	620	222	310	70,1	MMA 300150
	200	315	670	272	320	79,4	MMA 300200
	250	315	720	322	330	89,2	MMA 300250
	300	315	770	372	340	93,2	MMA 300300



**MMI-KS SPOJNI KOMAD S KOLČACIMA I NAVOJNIM PRIKLJUČKOM**  
**MMI-KS DOUBLE SOCKET COLLAR THREADED BRANCH**  
**MMI-KS DOPPELMUFFE MIT INNENGEWINDESTUTZEN**

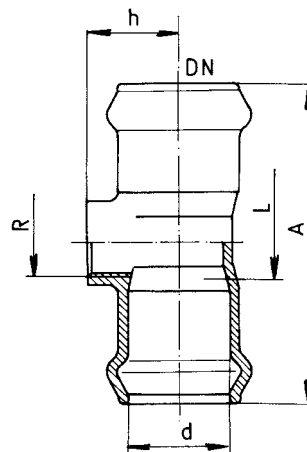
Broj artikla:  
 Art. No.  
 Artikelnummer:  
**P – 955**



**DIN 16451**

**PN 10/16**

Nazivni promjer Nominal size Nennweite DN / R Zoll	A	d	L	h	kg	Typ
50 / 1"	255	63	68	60	3,6	MMI 05025
50 / 1 ¼"	255	63	68	60	4,3	MMI 05032
50 / 1 ½"	255	63	68	60	4,3	MMI 05040
50 / 2"	255	63	68	60	4,5	MMI 05050
65 / 1"	270	75	71	65	5	MMI 06525
65 / 1 ¼"	270	75	71	65	5,6	MMI 06532
65 / 1 ½"	270	75	71	65	5,6	MMI 06540
65 / 2"	270	75	71	65	5,8	MMI 06550
80 / 1"	290	90	74	85	6,6	MMI 08025
80 / 1 ¼"	290	90	74	85	7,2	MMI 08032
80 / 1 ½"	290	90	74	85	7,2	MMI 08040
80 / 2"	290	90	74	85	7,4	MMI 08050
100 / 1"	315	110	79	90	8,4	MMI 10025
100 / 1 ¼"	315	110	79	90	9	MMI 10032
100 / 1 ½"	315	110	79	90	9	MMI 10040
100 / 2"	315	110	79	90	9,2	MMI 10050
125 / 1"	340	140	85	105	10,9	MMI 12525
125 / 1 ¼"	340	140	85	105	12,5	MMI 12532
125 / 1 ½"	340	140	85	105	12,5	MMI 12540
125 / 2"	340	140	85	105	12,7	MMI 12550
150 / 1"	365	160	91	115	15,1	MMI 15025
150 / 1 ¼"	365	160	91	115	15,7	MMI 15032
150 / 1 ½"	365	160	91	115	15,7	MMI 15040
150 / 2"	365	160	91	115	15,9	MMI 15050
*200 / 1"	430	225	103	155	27,0	MMI 20025
*200 / 1 ¼"	430	225	103	155	27,6	MMI 20032
*200 / 1½"	430	225	103	155	27,6	MMI 20040
*200 / 2"	430	225	103	155	27,8	MMI 20050
*250 / 2"	490	280	115	180	41,4	MMI 25050
*300 / 2"	523	315	127	195	51,2	MMI 30050

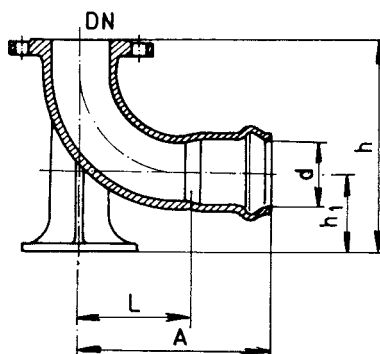


**4**

- \* Izrađujemo na poseban zahtjev
- \* Made on spezial application
- \* Auf spszielle Bestellung lieferbar

EN – KS LUČNI KOMAD SA STOPALOM  
 EN – KS FLANGED SOCKET 90° DUCKFOOT BEND  
 EN – KS MUFFENFUSSKRÜMMER

Broj artikla:  
 Art. No.  
 Artikelnummer:  
**P – 961**



4

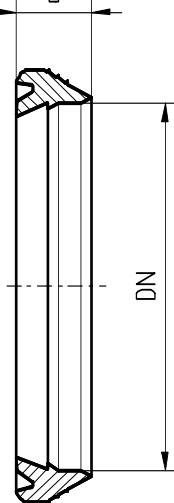
DIN 16451

PN 10/16



Nazivni promjer Nominal size Nennweite							
DN	d	A	h	L	h <sub>1</sub>	kg	Typ
80	90	260	288	140	108	15,2	EN 080A
80	110	260	300	165	120	13,6	EN 080B
100	110	295	320	160	120	20,5	EN 100

**GBF – BRTVA**  
 - sintetički kaučuk  
**GBF – SEALING – O-RING**  
 - Synthetic rubber  
**GBF – DICHTUNGSRING**  
 Kunstgummi

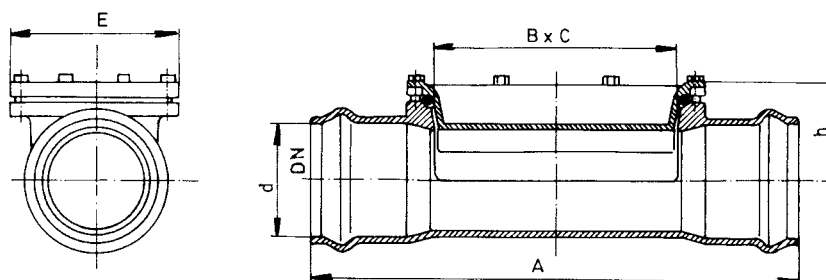


Broj artikla:  
 Art. No.  
 Artikelnummer:  
**P-950**

<b>DN</b>	63	75	90	110	140	160	225	280	400	500
<b>B (mm)</b>	19	20	21	23	25	28	32	39	46	54

**FAZONSKI KOMAD S OTVOROM ZA ČIŠĆENJE ZA PVC CIJEVI**  
**DOUBLE SOCKET – HATCHBOXES**  
**FORMSTÜCK MIT PUTZÖFFNUNG FÜR PVC – DRUCKROHRE PN 10/16**

Broj artikla:  
 Art. No.  
 Artikelnummer:  
**P-962**



**OP – KS**

**GGG**

**PN10/16**

Nazivni promjer Nominal size Nennweite <b>DN</b>	<b>A</b>	<b>B*C</b>	<b>E</b>	$\phi$ <b>d</b>	<b>h</b>	<b>kg</b>	<b>Typ</b>
<b>100</b>	505	250 x 100	160	110	117	19,4	OP-KS 100
<b>125</b>	610	300 x 125	185	140	125	24,5	OP-KS 125
<b>150</b>	615	300 x 150	210	160	132	34,0	OP-KS 150
<b>*200</b>	750	350 x 200	270	225	170	59,6	OP-KS 200
<b>*250</b>	875	400 x 250	330	280	197	88	OP-KS 250
<b>*300</b>	950	450 x 300	380	315	220	137	OP- KS 300

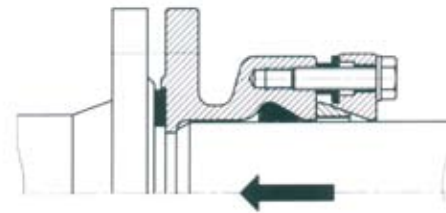
\* Izrađujemo na poseban zahtjev  
 \* Made on spezial application  
 \* Auf spszielle Bestellung lieferbar

## Sastavljanje – Montage – Assembly

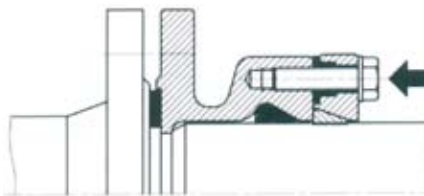
Skositi cijev pomoću cijevnog glodala. Kraj cijevi navlažiti vodom ili sapunicom. Ne uljiti!  
 Rohr anschrägen, Lebensmittel- und gummitaugliche Gleitmittel verwenden!  
 Chamfer the pipe – moisten end of pipe with water or weak soap solution. Do not use oil!



Umetnuti cijev do kraja kolčaka.  
 Rohr bis Anschlag in Muffe einschieben.  
 Push the pipe to the end of the socket.

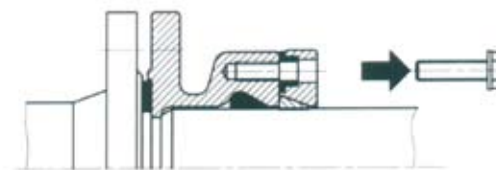


Vijcima pritegnuti stezni element zajedno s zahvatnim prstenom.  
 Schubsicherungsschrauben kreuzweise festziehen bis Spannring am Gehäuse ansethet.  
 Tighten the lock ring bolts crosswise until lock ring is tight on bushes.

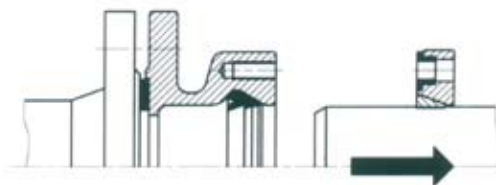


## Rastavljanje – Demontage – Dismantling

Otpustiti i izvaditi vijke.  
 Schubsicherungsschrauben lösen und entfernen.  
 Undo and remove lock ring bolts.



Izvaditi cijev.  
 Rohr drehend herausziehen.  
 Twist and withdraw the pipe.







**MMA-PE-HD SPOJNI KOMAD S KOLČACIMA I PRIRUBNICOM**  
**MMA-PE-HD STÜCKE (DOPPELMUFFE/ABZW. FLANSCH)**  
**MMA-PE-HD DOUBLE SOCKET TEES WITH FLANGED BRANCH**

Broj artikla:  
 Art. No.  
 Artikelnummer:  
**P – 953A**

MMA-PE-HD

PN 10/16

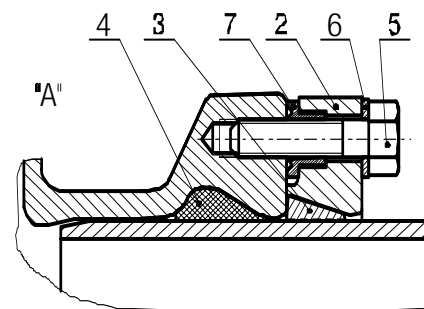
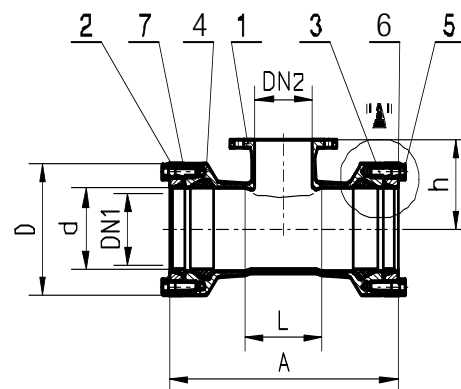
GGG



4

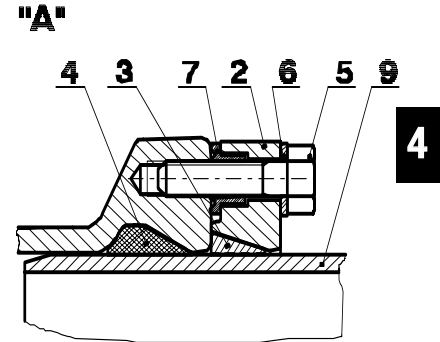
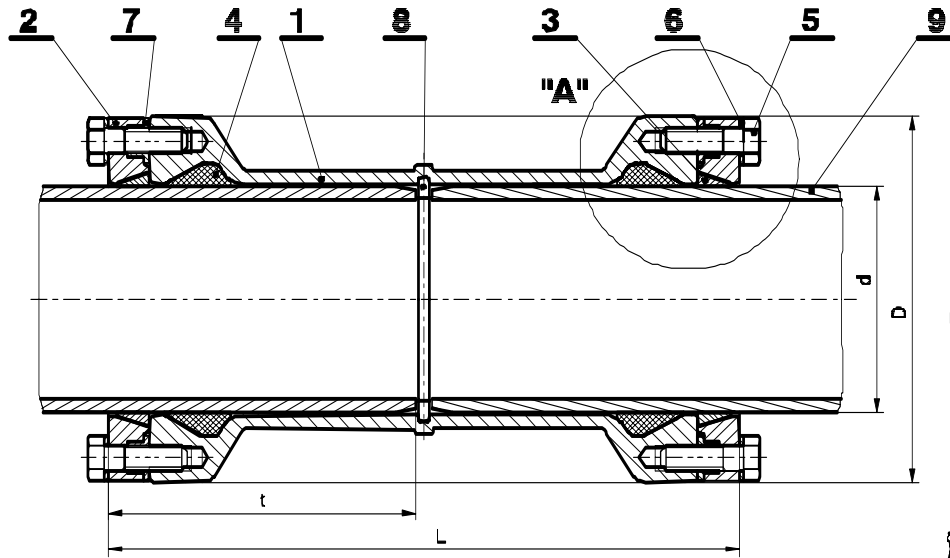
Nazivni promjer Nennweite Nominal size	DN1	DN2	d	D	A	L	h	Masa Gewicht Weight kg	Oznaka artikla Art.-Nr.
50	50	63	130	290	63	140	8,3	MMA 050050 E	
65	50	75	140	305	66	150	9,3	MMA 065050 E	
	65	75	140	320	66	150	10,5	MMA 065065 E	
80	50	90	155	325	69	160	11,0	MMA 080050 E	
	65	90	155	340	84	160	12,2	MMA 080065 E	
	80	90	155	355	99	165	13,2	MMA 080080 E	
100	50	110	175	350	74	170	12,9	MMA 100050 F	
	65	110	175	365	89	175	13,9	MMA 100065 E	
	80	110	175	380	104	175	17,0	MMA 100080 E	
	100	110	175	400	124	180	17,8	MMA 100100 E	
125	50	140	194	375	80	185	18,4	MMA 125050 E	
	65	140	194	390	95	185	19,7	MMA 125065 E	
	80	140	194	405	110	190	21,0	MMA 125080 E	
150	100	140	194	425	130	195	22,0	MMA 125100 E	
	125	140	194	450	135	200	25,6	MMA 125125 F	
	50	160	211	410	98	205	22,2	MMA 150050 E	
	65	160	211	425	98	210	24,0	MMA 150065 E	
200	80	160	211	440	116	205	23,8	MMA 150080 E	
	100	160	211	460	136	210	27,2	MMA 150100 E	
	125	160	211	485	161	215	29,5	MMA 150125 E	
	150	160	211	510	186	220	32,7	MMA 150150 E	
	80	200	290	510	128	223	30,4	MMA 200080 A E	
250	100	200	290	515	150	240	32,3	MMA 200100 A E	
	125	200	290	555	173	233	34,2	MMA 200125 A E	
	150	200	290	600	243	273	37,2	MMA 200150 A E	
	200	200	290	600	240	280	44,2	MMA 200200 A E	
	80	225	314	495	128	235	38,9	MMA 200080 B E	
	100	225	314	525	148	240	41,6	MMA 200100 B E	
	125	225	314	550	173	245	43,8	MMA 200125 B E	
300	150	225	314	575	198	250	47,7	MMA 200150 B E	
	200	225	314	625	248	260	55,4	MMA 200200 B E	
	80	250	339	565	140	250	40,5	MMA 250080 A E	
	100	250	339	585	160	255	42,5	MMA 250100 A E	
	150	250	339	635	210	265	47,5	MMA 250150 A E	
	200	250	339	685	260	275	54,5	MMA 250200 A E	
	250	250	339	735	310	285	72,5	MMA 250250 A E	
350	80	280	370	550	140	282	45,5	MMA 250080 B E	
	100	280	370	570	160	288	54,4	MMA 250100 B E	
	150	280	370	625	210	288	54,4	MMA 250150 B E	
	200	280	370	735	260	285	74,9	MMA 250200 B E	
	250	280	370	725	310	287	74,3	MMA 250250 B E	
	80	315	420	600	152	295	64,9	MMA 300080 E	
	100	315	420	620	172	300	67,6	MMA 300100 E	
400	150	315	420	670	222	310	76,1	MMA 300150 E	
	200	315	420	720	272	320	85,4	MMA 300200 E	
	250	315	420	770	322	330	95,2	MMA 300250 E	
	300	315	420	820	372	340	99,2	MMA 300300 E	

POZ. TEIL PART	MATERIJAL PO EN-LU WERKSTOFF NACH EN MATERIAL ACC. TO EN	MATERIJAL PO DIN-LU WERKSTOFF NACH DIN MATERIAL ACC. TO DIN
1.	EN-GJS	GGG
2.	EN-GJS	GGG
3.	CG7505	GuZn 33 Pb
4.	EPDM	EPDM
5.	A2	A2
6.	A2	A2
7.	PE-HD	PE-HD

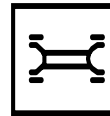


**U-PE-HD SPOJNI KOMAD S KOLČACIMA**  
**U-PE-HD STÜCKE (DOPPELMUFFE)**  
**U-PE-HD DOUBLE SOCKET TEES**

Broj artikla:  
 Art. No.  
 Artikelnummer:  
**P – 953B**



**4**



**U-PE-HD PN 10/16 GGG**

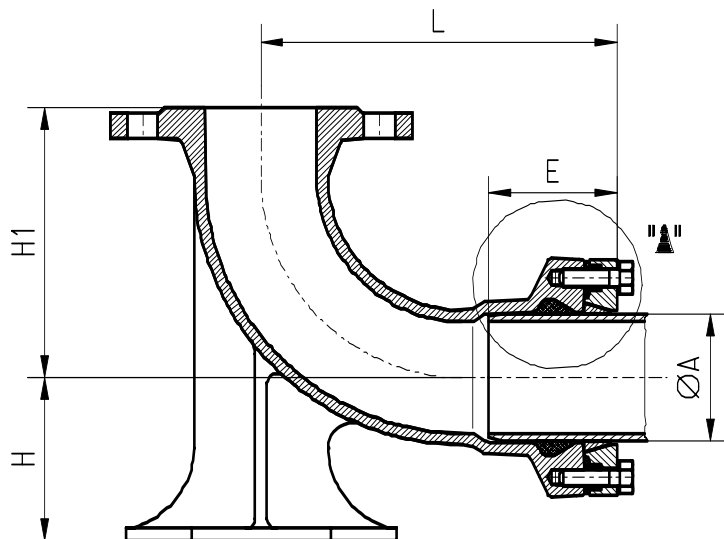
Promjer cijevi Rohr-Durchmesser Diameter of pipe PE-HD / PVC $\phi d$	L	$\phi D$	t	Broj vijaka Schraubenanzahl Number of bolts	Oznaka artikla Art. Nr.
63	170	124	80	2	U 063 KS
75	170	138	82	2	U 075 KS
90	180	152	85	4	U 090 KS
110	180	172	85	4	U 110 KS
125	190	193	87	4	U 125 KS
140	210	210	93	4	U 140 KS
160	220	236	105	4	U 160 KS
180	240	258	113	4	U 180 KS
200	270	284	125	4	U 200 KS
225	270	314	128	4	U 225 KS
250	310	347	145	6	U 250 KS
280	310	376	148	6	U 280 KS
315	365	422	178	6	U 315 KS

POZ TEIL PART	MATERIJAL PO EN-11 WERKSTOFF NACH EN MATERIAL ACC TO EN	MATERIJAL PO EN-11 WERKSTOFF NACH EN MATERIAL ACC TO EN
1.	EN-GJS	GGG
2.	EN GJS	GGG
3.	CC750S	CuZn33Pb
4.	EPDM	EPDM
5.	A2	A2
6.	A2	A2
7.	PE-HD	PE-HD
8.	POLYACETAL	POLYACETAL

**EN-PE-HD LUČNI KOMAD SA STOPALOM**  
**EN-PE-HD MUFFENFUSSKRÜMMER**  
**EN-PE-HD FLANGED SOCKET 90° DUCKFOOT BEND**

Broj artikla:  
 Art. No.  
 Artikelnummer:  
**P – 961A**

4



**EN-PE-HD**

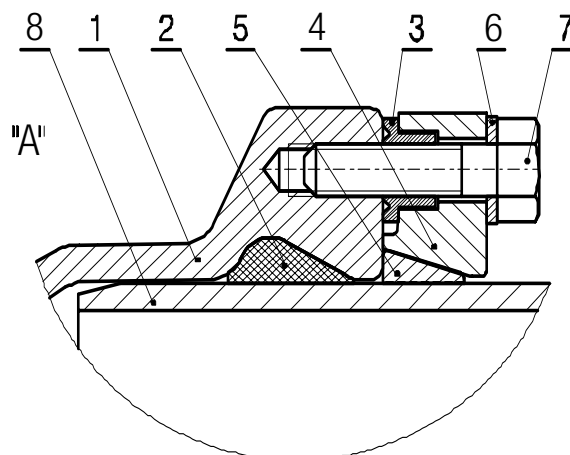
**PN 10/16**

**GGG**



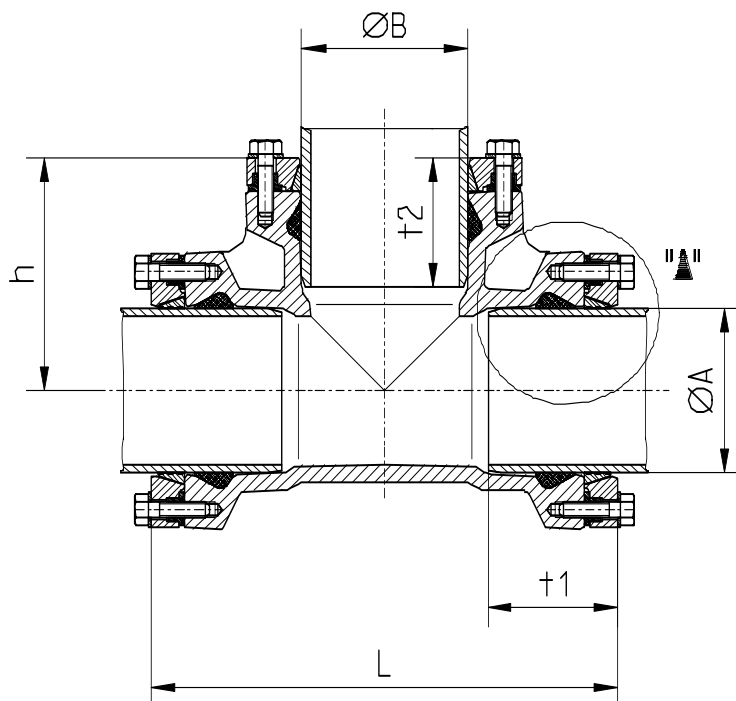
Nazivni promjer Nennweite Nominal size <b>DN</b>	Cijev Rohre Pipe (PVC/PHD) <b>ΦA</b>	<b>L</b>	<b>E</b>	<b>H</b>	<b>H1</b>	Masa Gewicht Weight <b>kg</b>	Vijci Schrauben Screws		Oznaka artikla Art. Nr.
							<b>n</b>	<b>M</b>	
<b>80</b>	90	220	85	110	165	13	4	10	EN 080
<b>100</b>	110	230	85	125	180	16	4	10	EN 100

POZ. TEIL PART	MATERIJAL PO EN-u WERKSTOFF NACH EN MATERIAL ACC. TO EN	MATERIJAL PO DIN-u WERKSTOFF NACH DIN MATERIAL ACC. TO DIN
1	EN-GJS	GGG
2	EPDM	EPDM
3	PE-HD	PE-HD
4	EN-GJS	GGG
5	CC750S	CuZn 33 Pb
6	A2	A2
7	A2	A2
8	PE-HD/PVC	PE-HD/PVC



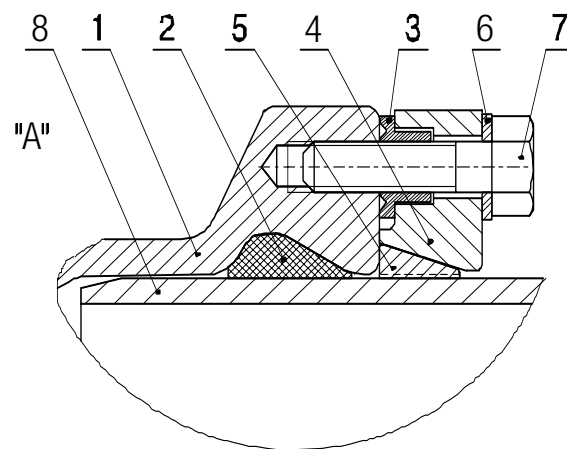
**MMB-PE-HD OTCJEPNI KOMAD**  
**MMB-PE-HD STÜCKE**  
**MMB-PE-HD FLANGED TEES**

Art. No.  
 Artikelnummer:  
**P – 965**



POZ. TEIL PART	MATERIJAL PO EN-u WERKSTOFF NACH EN MATERIAL ACC. TO EN	MATERIJAL PO DIN-u WERKSTOFF NACH DIN MATERIAL ACC. TO DIN
1	EN-GJS	GGG
2	EPDM	EPDM
3	PE-HD	PE-HD
4	EN-GJS	GGG
5	CC750S	CuZn 33 Pb
6	A2	A2
7	A2	A2
8	PE-HD/PVC	PE-HD/PVC

**4**



**MMB-PE-HD PN 10/16 GGG**



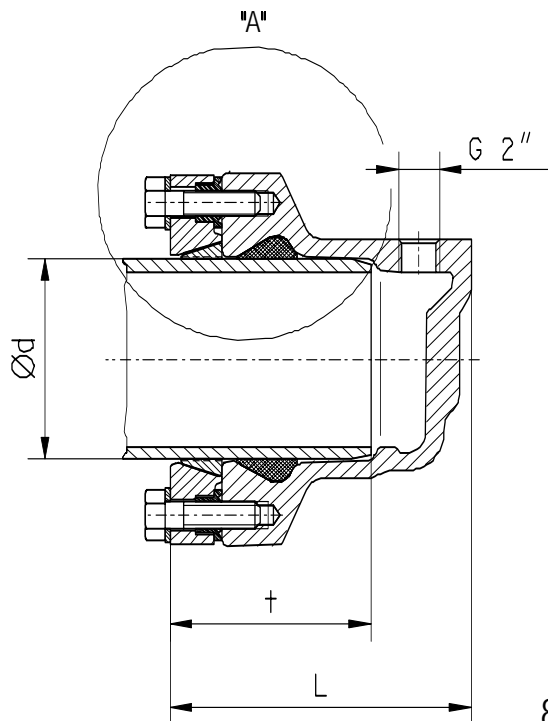
ΦA	ΦB	L	t1	t2	h	Masa Gewicht Weight kg	Oznaka artikla Art. Nr.
63	63	236	83	83	118	6,0	MMB 063063 E
75	75	250	85	85	125	7,7	MMB 075075 E
90	90	268	85	85	134	9,0	MMB 090090 E
110	63	240	85	80	140	7,7	MMB 110063 E
110	90	270	85	85	145	8,9	MMB 110090 E
110	110	290	85	85	145	9,2	MMB 110110 E
125	90	274	87	85	150	10,4	MMB 125090 E
125	110	294	97	85	150	10,7	MMB 125110 E
125	125	306	90	90	153	15,0	MMB 125125 E
140	90	288	93	85	157,5	12,2	MMB 140090 F
140	110	305	93	85	160	12,5	MMB 140110 E
140	140	344	96	96	167	19,0	MMB 140140 E
160	90	310	105	85	170	14,1	MMB 160090 E
160	110	330	105	85	170	14,3	MMB 160110 E
160	160	380	105	105	190	16,6	MMB 160160 E
180	125	360	113	87	180	24,0	MMB 180125 E
180	180	415	113	113	207,5	29,0	MMB 180180 E
200	200	460	128	128	230	35,0	MMB 200200 E
225	90	356	128	85	200	29,5	MMB 225090 E
225	110	376	128	128	200	30,0	MMB 225110 F

\* Na poseban upit  
 \* On special request  
 \* Auf besondere Anfrage

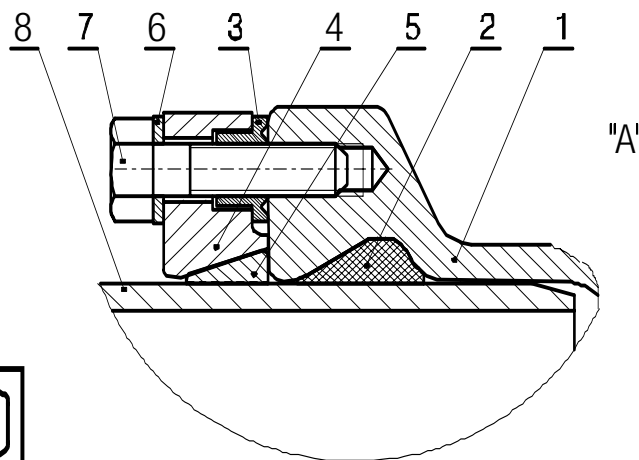
**K-PE-HD ZAVRŠNA KAPA**  
**K-PE-HD END KAPE**  
**K-PE-HD END CAP**

Art. No.  
 Artikelnummer:  
**P – 966**

4



POZ-TEIL PART	MATERIJAL PO EN-u WERKSTOFF NACII EN MATERIAL ACC. TO EN	MATERIJAL PO DIN-u WERKSTOFF NACII DIN MATERIAL ACC. TO DIN
1	EN-GJS	GGG
2	EPDM	EPDM
3	PE-HD	PE-HD
4	EN-GJS	GGG
5	CC750S	CuZn 33 Pb
6	A2	A2
7	A2	A2
8	PE-HD/PVC	PE-HD/PVC



**K-PE-HD PN 10/16 GGG**

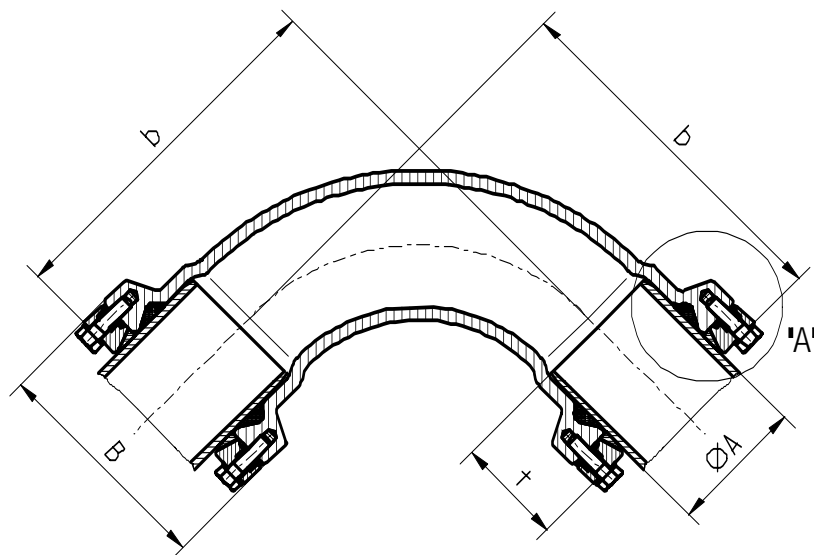


Ød	L	t	Masa Gewicht Weight kg	Oznaka artikla Art. Nr.
63	105	80	2,7	K 063 E
75	140	80	3,2	K 075 E
90	140	85	4,2	K 090 E
110	160	85	6,2	K 110 E
125	160	85	6,0	K 125 E
140	170	95	7,2	K 140 E
160	180	105	9,6	K 160 E
180	190	115	12,2	K 180 E
200	205	125	14,6	K 200 E
225	205	130	16,6	K 225 E

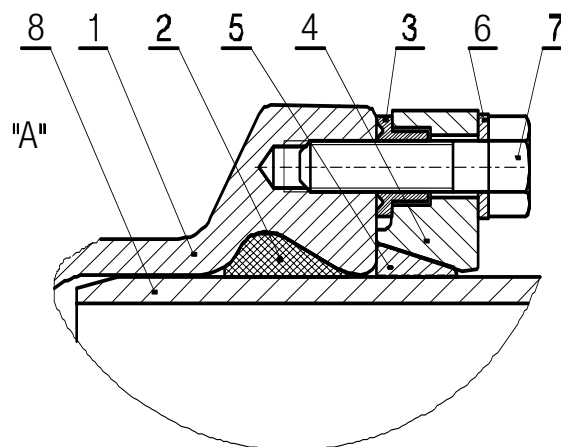
- \* Na poseban upit
- \* On special request
- \* Auf besondere Anfrage

**Q-PE-HD LUČNI KOMAD 90° S KOLČAKOM**  
**Q-PE-HD DOPPELMUFFENBOGEN MIT MUFFEN 90°**  
**Q-PE-HD 90° BEND**

Broj artikla:  
 Art. No.  
 Artikelnummer:  
**P – 967**



POZ. TEIL PART	MATERIAL PO EN-u WERKSTOFF NACH EN MATERIAL ACC. TO EN	MATERIAL PO DIN-u WERKSTOFF NACH DIN MATERIAL ACC. TO DIN
1	EN-GJS	GGG
2	EPDM	EPDM
3	PE-HD	PE-HD
4	EN-GJS	GGG
5	CC750S	CuZn 33 Pb
6	A2	A2
7	A2	A2
8	PE-HD/PVC	PE-HD/PVC

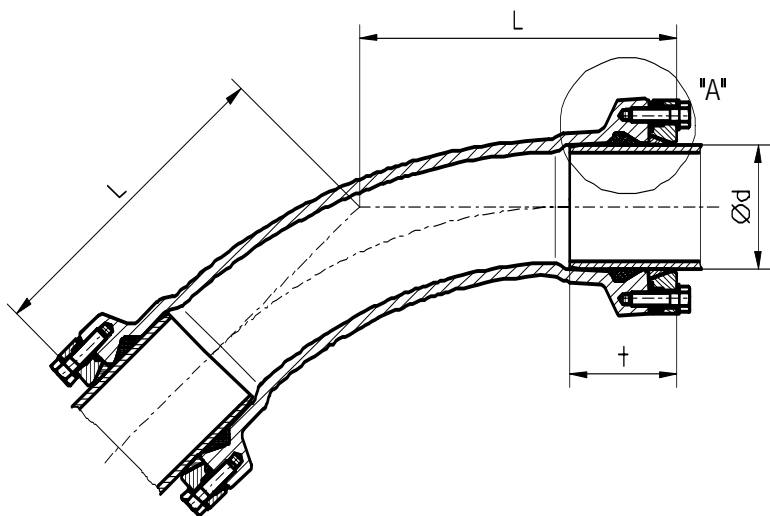


**Q-PE-HD PN 10/16 GGG**

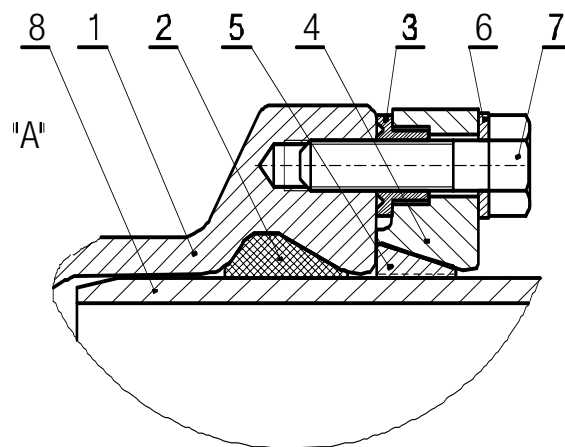
ΦA	B	b	t	Masa Gewicht Weight kg	Oznaka artikla Art. Nr.
63	124	153	80	4,2	Q 063 E
75	138	170	82	5,5	Q 075 E
90	152	188	85	7,1	Q 090 E
110	172	213	85	9,2	Q 110 E
125	193	240	87	11,7	Q 125 E
140	210	246	93	15,0	Q 140 E
160	236	283	105	19,6	Q 160 E
180	258	293	113	24,0	Q 180 E
200	284	353	125	37,5	Q 200 E
225	314	355	128	43,0	Q 225 E

**MMK-PE-HD LUČNI KOMAD 45° S KOLČAKOM**  
**MMK-PE-HD DOPPELMUFFENBOGEN MIT MUFFEN 45°**  
**MMK-PE-HD 45° BEND**

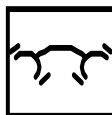
Broj artikla:  
 Art. No.  
 Artikelnummer:  
**P – 968**



4



POZ. TEJL PART	MATERIJAL PO EN-u WERKSTOFF NACH EN MATERIAL ACC. TO EN	MATERIJAL PO DIN-u WERKSTOFF NACH DIN MATERIAL ACC. TO DIN
1	EN-GJS	GGG
2	EPDM	EPDM
3	PE-HD	PE-HD
4	EN-GJS	GGG
5	CC750S	CuZn 33 Pb
6	A2	A2
7	A2	A2
8	PE-HD/PVC	PE-HD/PVC



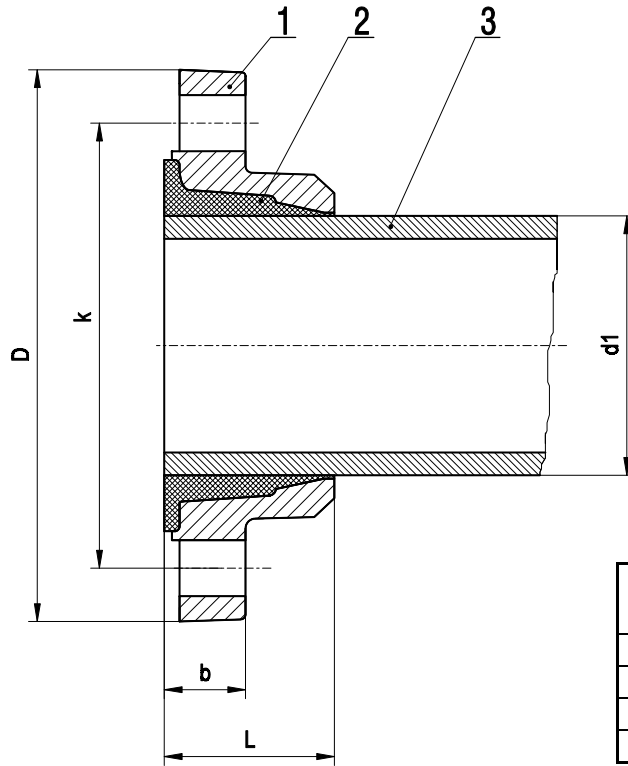
**MMK 45-PE-HD PN 10/16 GGG**

Ød	L	t	Masa Gewicht Weight kg	Oznaka artikla Art. Nr.
63	110	80	3,7	MMK 45 063 E
75	120	80	4,5	MMK 45 075 E
90	130	85	6,4	MMK 45 090 E
110	140	85	7,5	MMK 45 110 E
125	155	85	9,9	MMK 45 125 E
140	160	95	12,3	MMK 45 140 E
160	180	105	16,2	MMK 45 160 E
180	190	115	19,5	MMK 45 180 E
200	280	125	30,0	MMK 45 200 E
225	225	130	39,0	MMK 45 225 E



**DVOKOMORNA SPECIJALNA PRIRUBNICA ZA SPAJANJE PVC CIJEVI  
 PIPE CONNECTION DOUBLECHAMBER – SPECIAL FLANGE  
 ZWEIKAMMER – SPEZIALFLANSCH FÜR VERBINDEN PVC ROHRLEITUNGEN**

Broj artikla:  
 Art. No.  
 Artikelnummer:  
**781**



POZ. TEIL PART	MATERIJAL PO DIN-u WERKSTOFF NACH DIN MATERIAL ACC TO DIN
1.	GGG
2.	EPDM
3.	PVC
	PHD

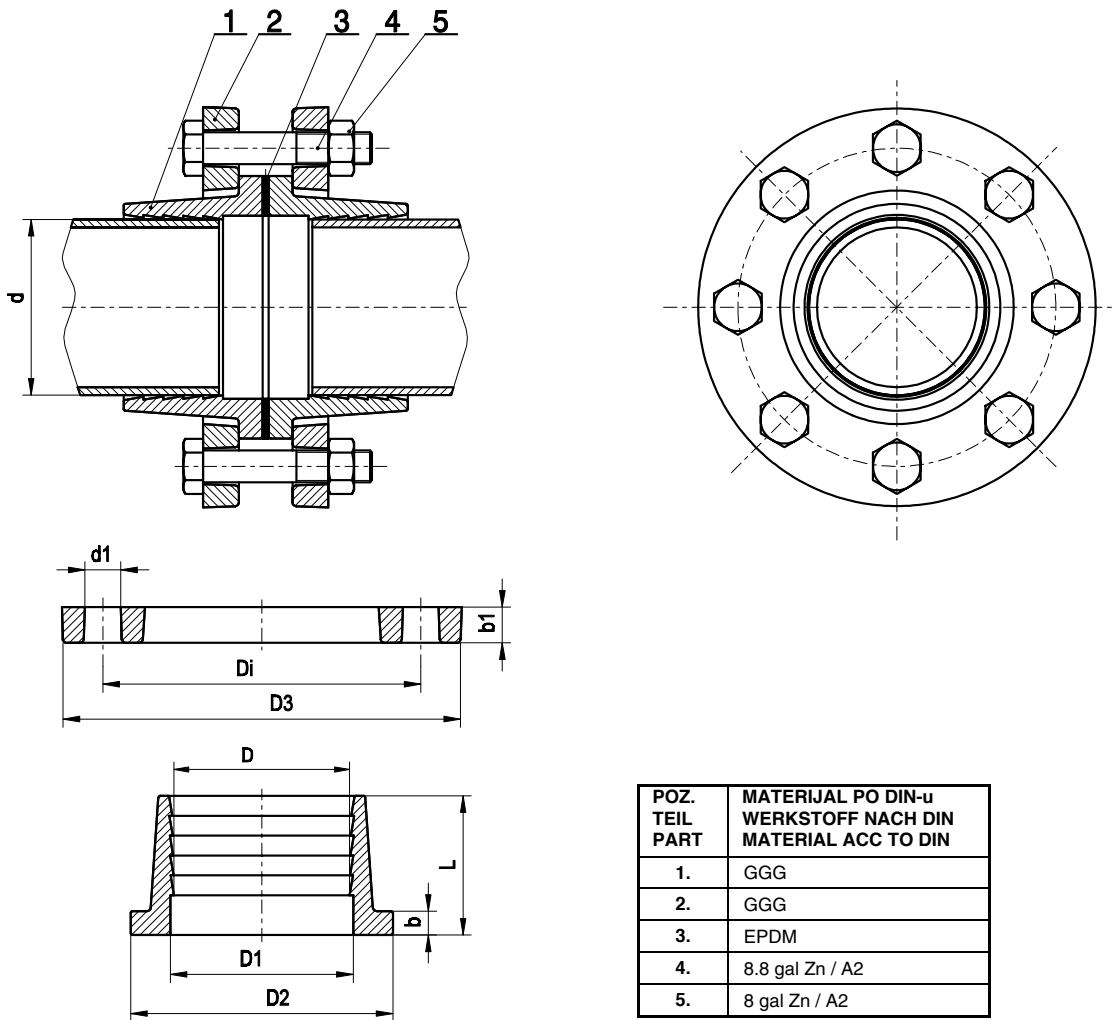
**4**

Nazivni promjer Nominal size Nennweite  DN	d <sub>1</sub>		D	k		b	L	Vijci Bolts Schrauben n		
	PN 10	PN 16		PN 10	PN 16			PN 10	PN 16	M
50		63	165		125	19	52	4		M 16
65		75	185		145	19	55	4		M 16
80		90	200		160	19	60	8		M 16
100		110	220		180	19	60	8		M 16
125		140	250		210	19	62	8		M 16
150		160	285		240	19	64	8		M 20
200	200	225	340		295	20	68	8	12	M 20
250	250	280	400	350	355	22	75	12		M 20
300	315	-	455	400	-	24,5	77	12		M 20

**ZUBNA SPOJKA ZA SPAJANJE PVC/PEHD CIJEVI**  
**TOOTH – COUPLUNG FOR PIPE CONNECTION**  
**ZAHN – KUPPLUNG FÜR VERBINDEN PVC/PEHD ROHRLEITUNGEN**

Broj artikla:  
 Art. No.  
 Artikelnummer:  
**783**

**4**



d	D	D1	D2	b	L	Di	D3	b1	d1	Vijci Bolts Schrauben	
										n	M
63	60,8	62	99	10	60	125	165	16	18	4	M16 x 75
75	74	77	118	12	65	145	185	16	18	4	M16 x 75
90	88,4	92	132	12	70	160	200	18	18	8	M16 x 85
110	108	112	156	14	80	180	220	20	18	8	M16 x 90
125	123	127	184	14	82	210	250	20	18	8	M16 x 90
160	158	162	211	15	102	240	300	22	22	8	M20 x100